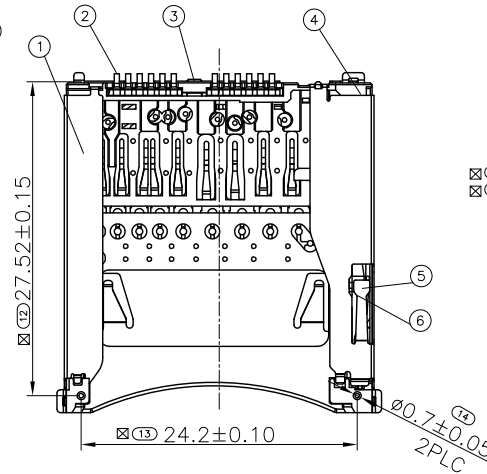
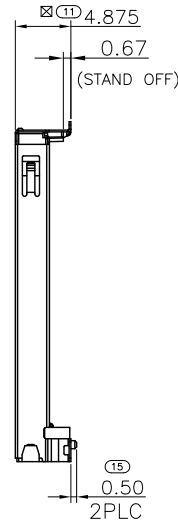
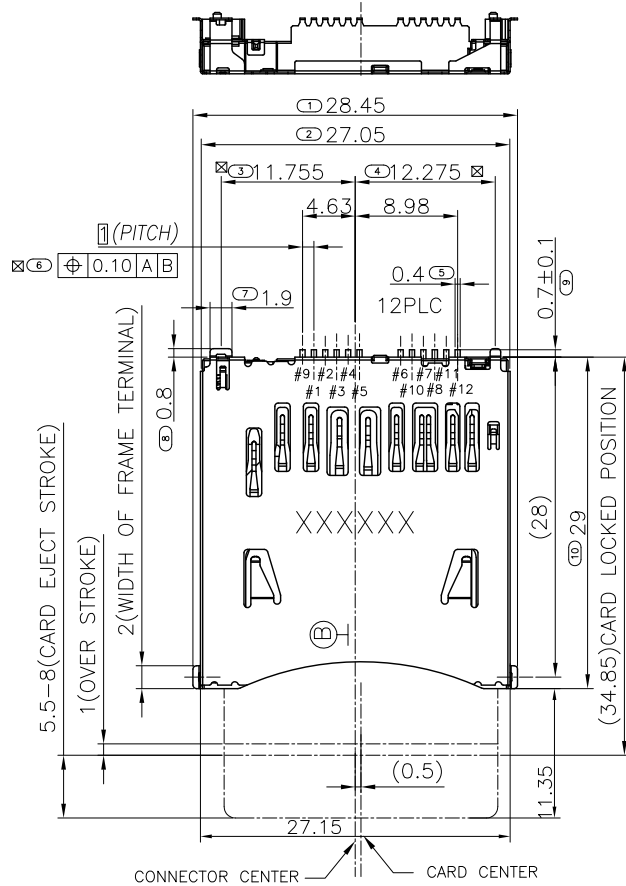
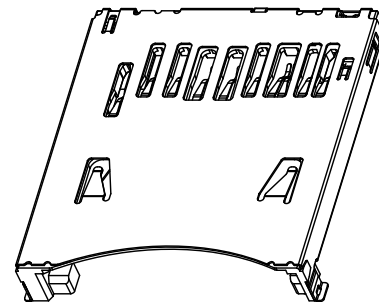
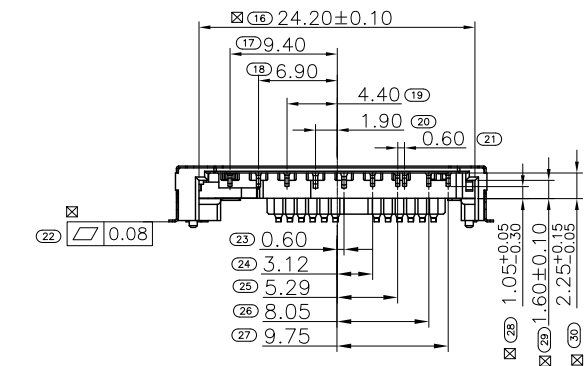


REV.	ECN.NO.	MODIFY.CONTENT




NOTES :

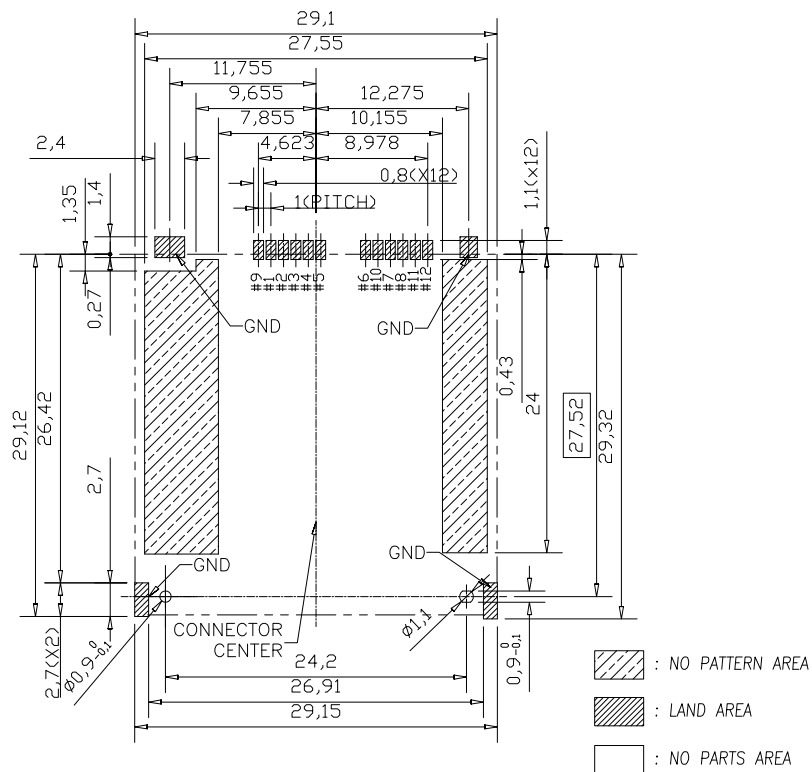
- MATERIAL :
 - HOUSING/SLIDER: LCP (宝理 E471i OR NIPPON MG350 OR KINGFA Vicryst R845 OR OTHER) WITH 30% GF, 30% REGRIND MAX, UL94 V-0, BLACK COLOR.
 - SHELL: SUS301 1/2H OR 3/4H T=0.12mm
 - CONTACTS: PHOSPHOR BRONZE, C5210-EH T=0.12mm
- FINISH :
 - CONTACT: GOLD PLATE ON CONTACT AREA, 1.27um [50u"] MIN. NICKEL UNDER PLATING OVERALL.
 - SHELL: 1.27um [50u"] MIN. SOLDERABILITY NICKEL UNDER PLATING OVERALL.
- " " SHOWS FAI MEASUREMENT ITEMS.
- " " SHOWS QIP INSPECTION ITEMS.
- "POM#" INDICATE THE MEASUREMENT POINT OF PLATING.
- THIS DIMENSION MUST BE CONTROLLED UNDER TOLERANCE AFTER IR REFLOW.
- THIS PRODUCT MUST BE OK THAT SOLDER, FUNCTIONAL TEST AND NO ABNORMALITY AFTER IR REFLOW.
- DATE CODE : LASER YYWW (YY: YEAR, WW: WEEK, D: DAY)
- LOW HALOGEN SPECIFICATION
 - CHLORINE (CL): 750 ppm MAX.
 - BROMINE (BR): 750 ppm MAX.
 - CL + BR : 1200 ppm MAX.



TW153-AP401-**

- 00: 素材
- 08: 功能区镀金1U", 锡脚Gold Flash
- 09: 功能区镀金3U", 锡脚Gold Flash
- 10: 功能区镀金5U", 锡脚Gold Flash
- 11: 功能区镀金10U", 锡脚Gold Flash
- 12: 功能区镀金30U", 锡脚Gold Flash

GENERAL TOLERANCE		DWG.NO.	TW153-AP401-00	PART.NO.	TW153-AP401-**	DRAWN	L.M.J 2017.10.25	UNIT	mm	SCALE	NO SCALE
x.±0.50	x.°± 5°	REV.	A	TITLE	SD Push H4.70-2 conn.	CHECKED		 东莞市欧联电子科技有限公司 DONGGUAN OLN ELECTRONICS TECHNOLOGY CO., LTD.			
.x±0.25	.x°± 2°	SIZE		SHEET	1 OF 3	APPROVED					
.xx±0.15	.xx°± 1°	A4									



Pin No.	CD/DAT3	Card Detect / Data Lin
1	CD/DAT3	Card Detect / Data Lin
2	CMD	Command / Response
3	V _{SS1}	Supply voltage ground
4	V _{DD}	Supply voltage
5	CLK	Clock
6	V _{SS2}	Supply voltage ground
7	DAT0	Data Line
8	DAT1	Data Line
9	DAT2	Data Line
10	CD pin	
11	com pin	
12	W/P pin	

SWITCH (CIRCUIT) \ CARD STATUS	WITHOUT CARD	CARD INSERTED	
		WRITE PROTECT LOCK	WRITE PROTECT UNLOCK
NO.10 CD. AND NO.6 COMMON	OPEN	CLOSE	CLOSE
NO.12WP. AND NO.11 COMMON	OPEN	OPEN	CLOSE

RECOMMENDED PCB LAYOUT (layout tolerance:±0.05)